



GMT MONTHLY MEMBERSHIP PROGRESS REPORT

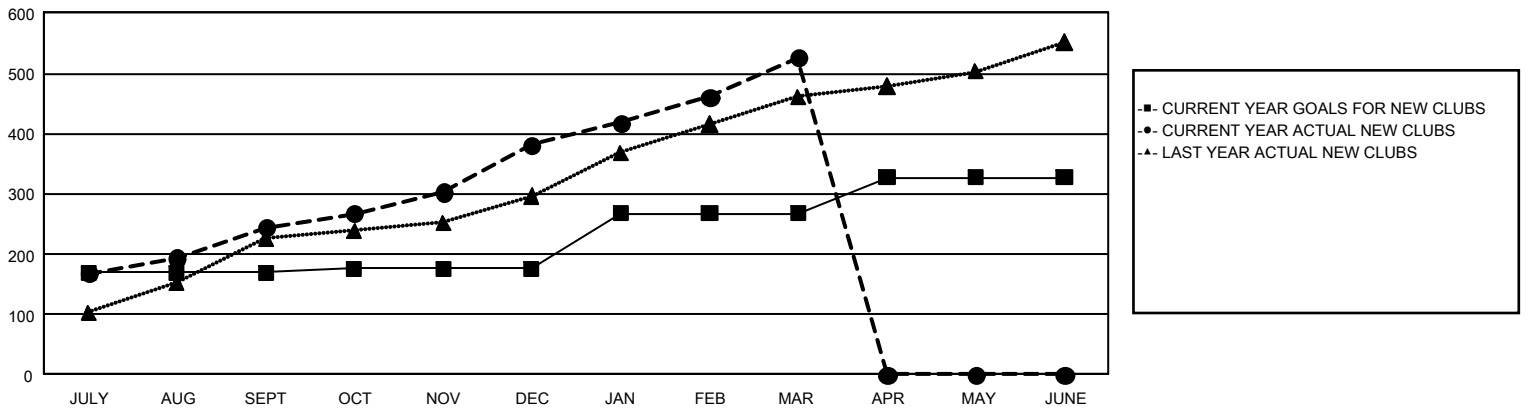
GAT Constitutional Area 6 - South Asia and Middle East

Results as of: 3/31/2026

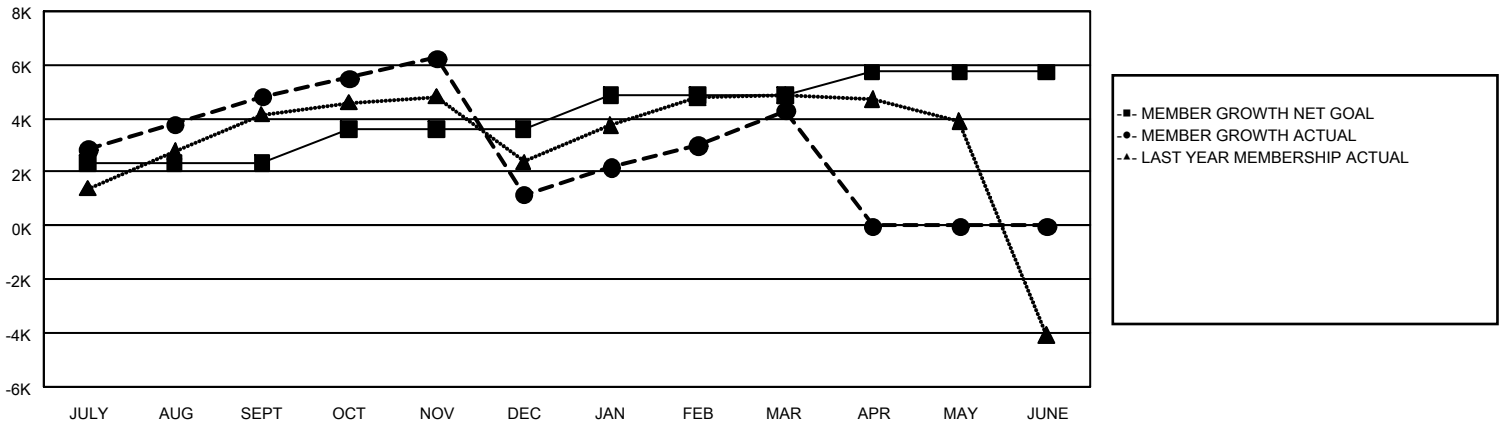
REPORT DOES NOT INCLUDE CLUBS IN UNDISTRICTED AREAS.

Clubs				Members			
RESULTS FOR 2025-2026				RESULTS FOR 2025-2026			
QUARTER	NEW CLUB GOAL	NEW CLUBS	DROPPED CLUBS	QUARTER	MEMBER GROWTH NET GOAL	MEMBER GROWTH ACTUAL	DROPPED MEMBERS ACTUAL (including transfers)
JULY/AUG/SEPT	169	244	50	JULY/AUG/SEPT	2,348	10,383	4,579
OCT/NOV/DEC	7	137	197	OCT/NOV/DEC	1,262	6,611	9,407
JAN/FEB/MAR	91	145	29	JAN/FEB/MAR	1,262	6,252	1,732
APR/MAY/JUNE	60	0	0	APR/MAY/JUNE	873	0	0

GOALS AND ACTUAL NEW CLUBS CUMULATIVE



GOALS AND ACTUAL MEMBERS CUMULATIVE



DROPPED CLUBS: 276	2,324 CLUBS OF 4,628 ADDED 1 OR MORE NEW MEMBERS	GENDER DISTRIBUTION
DROPPED MEMBERS		MALE 67,964 (71.36%)
DECEASED 76		FEMALE 27,220 (28.58%)
CLUB CANCELLED 5,088	CLICK HERE FOR CUMULATIVE MEMBERSHIP DATA	TOTAL FAMILY UNIT MEMBERS 46,733
OTHER 10,484		FAMILY MEMBERS PAYING HALF DUES 32,209
TOTAL 15,648		